

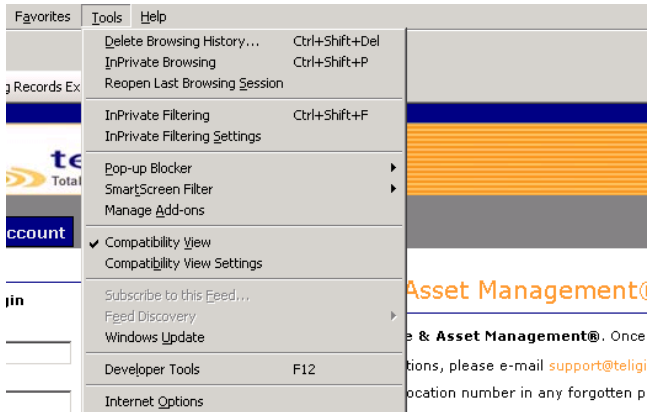
## Using the Teligistics TEAM Web Portal with Internet Explorer version 9 or greater

Internet Explorer must be placed into Compatibility Mode in order for some visual elements to be displayed properly on all Teligistics Web Portals.

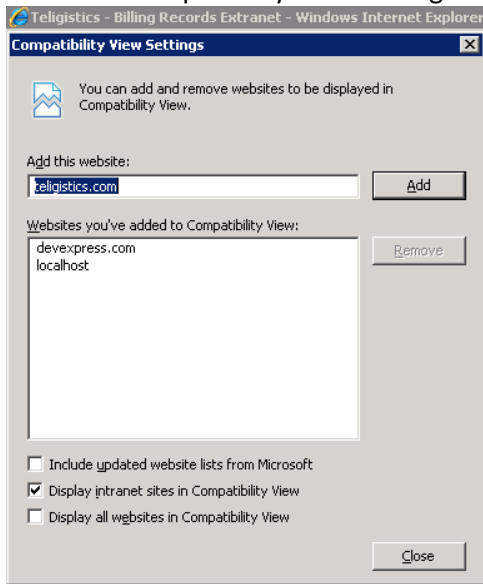
Internet Explorer version 9 or greater, renders visual elements differently than other browsers.

You can add Teligistics.com to IE compatibility settings. This will enable compatibility mode automatically when using our web portals.

1. Select Tools from the IE menu.



2. Select Compatibility View Settings



3. Click Add, then close.
4. Compatibility mode will now be automatically enabled when you visit teligistics.com.